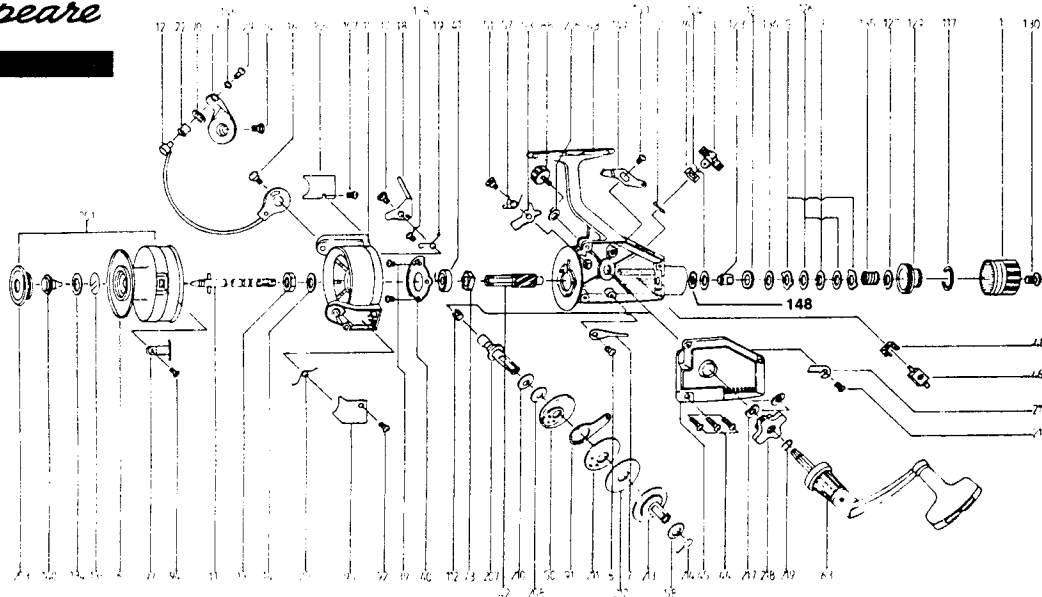


Shakespeare®

50/30

CANT TWIST 50/30



REF. NO.	PART NO.	DESCRIPTION	REF. NO.	PART NO.	DESCRIPTION
001	79-66-0174-01	Spool Assembly	88	79-12-0039-01	Handle Screw Cap Assembly
1	79-40-0146-01	Rear Drag Cap Assembly	91	79-37-0132-01	Oscillating Slider
3	79-72-0388-01	Rear Drag Washer "D"	92	79-58-0487-01	Bail Spring Cover Screw
5	79-72-0384-01	Rear Drag Washer "A"	94	79-58-0317-01	Line Clipscrew
6	79-66-0175-01	Spool	95	79-19-0038-01	Bail Spring Cover
7	79-67-0189-01	Click Claw	97	79-15-0026-01	Line Clip
8	79-58-0335-01	Click Claw Screw	106	79-19-0037-01	Kick Lever Cover
11	79-60-0110-01	Main Shaft Assembly	107	79-58-0323-01	Kick Lever Cover Screw
12	79-03-0079-01	Bail Arm Assembly	108	79-58-0319-01	Kick Lever Spring Screw
13	79-40-0117-01	Rotor Nut	112	79-11-0045-01	Silent Cam (A/R)
14	79-72-0392-01	Rotor Retainer Washer	117	79-54-0114-01	Rear Drag Ring
15	79-34-0097-01	Pickup Housing	123	79-33-0003-01	Slider Holder
16	79-58-0469-01	Bail Holder Screw	124	79-72-0382-01	Rear Drag Washer
17	79-58-0321-01	Kick Lever Screw	125	79-28-0106-01	Click Gear
18	79-37-0088-01	Kick Lever	126	79-72-0386-01	Rear Drag Washer "B"
19	79-67-0181-01	Kick Lever Spring	127	79-72-0390-01	Rear Drag Adjustable Washer
22	79-57-0021-01	Line Roller	129	79-40-0115-01	Rear Drag Nut
23	79-37-0095-01	Arm Lever Assembly	130	79-58-0332-01	Rear Drag Cap Screw
24	79-58-0471-01	Arm Lever Screw	134	79-72-0378-01	Spool Plate Washer
25	79-67-0183-01	Bail Spring	135	79-67-0187-01	Rear Drag Coil Spring
29	79-58-0352-01	Bail Screw	136	79-72-0466-01	Rear Drag Washer "E"
39	79-58-0342-01	Bearing Plate Screw	138	79-67-0179-01	Spool Lock Spring
40	79-47-0218-01	Bearing Plate	140	79-10-0052-01	Push Button
41	79-04-0042-01	Ball Bearing	146	79-72-0380-01	Bail Washer
42	79-46-0072-01	Pinion	148	79-54-0089-01	O-Ring
43	79-27-0093-01	Body Assembly	149	79-11-0037-01	Anti-Reverse Lever Cam
44	79-58-0485-01	Body Cover Screw	150	79-58-0340-01	Anti-Reverse Lever Cam Screw
45	79-19-0039-01	Body Cover Assembly	203	79-12-0021-01	Spool Cap
46	79-75-0054-01	Yoke	206	79-72-0479-01	Handle Screw Cap Washer
48	79-15-0028-01	Oscillating Slider Stopper	207	79-60-0099-01	Drive Gear Shaft Assembly
50	79-28-0138-01	Drive Gear	208	79-72-0431-01	Drive Gear Washer "B"
51	79-58-0337-01	Anti-Reverse Pawl Screw	211	79-47-0250-01	Drive Gear Holder Plate
52	79-45-0023-01	Anti-Reverse Lever Pin	212	79-72-0470-01	Pressure Metal Washer
53	79-43-0089-01	Anti-Reverse Pawl	213	79-23-0496-01	Pressure Metal Drag Washer
57	79-67-0191-01	Anti-Reverse Pawl Spring	214	79-67-0254-01	Pressure Sliding Spring
58	79-72-0394-01	Drive Gear Adjustable Washer	215	79-28-0131-01	Gear Stopper
60	79-10-0067-01	Anti-Reverse Lever	216	79-58-0446-01	Gear Stopper Screw
63	79-20-0117-01	Handle Assembly	217	79-72-0485-01	Slide Drag Spring Washer
70	79-17-0006-01	Bail Collar	218	79-79-0007-01	Slide Drag Assembly
73	79-28-0140-01	Ratchet Gear	219	79-54-0099-01	Gear Shaft Ring
76	79-67-0193-01	Anti-Reverse Lever P S/P	210	79-72-0469-01	Drive Gear Washer "O"